

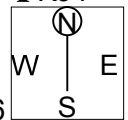
21

♠ AK72
♥ K5
♦ 7652
♣ KJ4

♠ 108
♥ QJ1083
♦ AKQJ
♣ 53

♠ QJ963
♥ A974
♦ 3
♣ AQ2

♠ 54
♥ 62
♦ 10984
♣ 109876



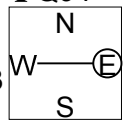
22

♠ 108432
♥ K10
♦ 1082
♣ Q94

♠ AQ9
♥ QJ874
♦ Q
♣ AJ108

♠ K76
♥ 632
♦ KJ6
♣ 6532

♠ J5
♥ A95
♦ A97543
♣ K7



♠ AQ9
♥ QJ874
♦ Q
♣ AJ108

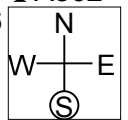
23

♠ 10
♥ KQJ72
♦ KJ9
♣ A862

♠ QJ3
♥ A109864
♦ Q4
♣ Q10

♠ 7542
♥ 3
♦ A1082
♣ 9543

♠ AK986
♥ 5
♦ 7653
♣ KJ7



♠ QJ3
♥ A109864
♦ Q4
♣ Q10

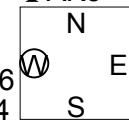
24

♠ Q63
♥ A96
♦ J853
♣ AK3

♠ A10854
♥ Q85
♦ 97
♣ 1082

♠ K2
♥ KJ107
♦ KQ42
♣ Q76

♠ J97
♥ 432
♦ A106
♣ J954



♠ A10854
♥ Q85
♦ 97
♣ 1082

Board (21) Av: NS=+820

N-S	E-W	Contract	L	N-S	E-W	IMP
1	5	6S	N 6 DK	1430		12
5	1	4S	N 6 H3	680		-4
2	12	4S	N 6 DA	680		-4
12	2	4S	S 6 H5	680		-4
3	19	4S	S 6 H5	680		-4
19	3	4S	N 6 DA	680		-4
4	24	4S	S 6 H6	680		-4
24	4	6S	S 6 H6	1430		12
6	13	4S	N 6 DK	680		-4
13	6	4S	N 6 DA	680		-4
7	23	4S	N 6 HT	680		-4
23	7	6S	N 6 DA	1430		12
8	16	4S	N 6 DA	680		-4
16	8	4S	S 6 H6	680		-4
9	17	4S	N 6 DQ	680		-4
17	9	4S	S 6 H6	680		-4
10	22	4S	S 6 H6	680		-4
22	10	4S	N 6 H3	680		-4
11	15	4S	N 6 DK	680		-4
15	11	4S	N 6 H6	680		-4
14	18	6S	N 6 DK	1430		12
18	14	4S	S 6 H6	680		-4
20	21	4S	S 6 DK	680		-4
21	20	6S	N 6 DK	1430		12

Board (22) Av: NS=-840

N-S	E-W	Contract	L	N-S	E-W	IMP
1	5	6H	E 6 S6	1430		-11
5	1	4H	E 5 H3	650		5
2	12	4H	E 6 S6	680		4
12	2	6H	E 6 S6	1430		-11
3	19	4H	E 6 S6	680		4
19	3	4H	E 5 D2	650		5
4	24	6H	E 6 S6	1430		-11
24	4	4H	E 6 S6	680		4
6	13	4H	E 6 S2	680		4
13	6	3NT	E 5 H6	660		5
7	23	4H	E 5 C3	650		5
23	7	4H	E 6 S6	680		4
8	16	6H	E 6 S6	1430		-11
16	8	4H	E 6 S6	680		4
9	17	6H	E 6 C3	1430		-11
17	9	4H	W 5 S2	650		5
10	22	3NT	E 5 C6	660		5
22	10	4H	E 6 S6	680		4
11	15	6H	E-1 H2	100		14
15	11	4H	E 6 S6	680		4
14	18	3NT	E 5 C5	660		5
18	14	4H	E 4 H2	620		6
20	21	4H	E 5 C3	650		5
21	20	6H	E 6 S6	1430		-11

Board (23) Av: NS=-360

N-S	E-W	Contract	L	N-S	E-W	IMP
1	5	2Hx	N-1 DQ	200		4
5	1	4S	E-1 HQ	100		10
2	12	4S	W 4 HK	620		-6
12	2	4S	W-1 HK	100		10
3	19	2Hx	N-2 SQ	500		-4
19	3	4S	W-1 D2	100		10
4	24	2Hx	N-3 SQ	800		-10
24	4	4S	E 4 HK	620		-6
6	13	2Hx	N-1 SQ	200		4
13	6	2Hx	N-1 SQ	200		4
7	23	2Hx	N-2 SQ	500		-4
23	7	2H	N-2 SQ	200		4
8	16	2Hx	N-1 SQ	200		4
16	8	2Hx	N-2 SQ	500		-4
9	17	4S	W 4 HK	620		-6
17	9	2Hx	N-1 SQ	200		4
10	22	2Hx	N-2 SQ	500		-4
22	10	4S	E 4 HK	620		-6
11	15	2Hx	N-2 SQ	500		-4
15	11	2Hx	N-1 SQ	200		4
14	18	2Hx	N-1 SQ	200		4
18	14	2Hx	N-3 SQ	800		-10
20	21	2Hx	N-2 SQ	500		-4
21	20	4C	S-3 SK	300		2

Board (24) Av: NS=-50

N-S	E-W	Contract	L	N-S	E-W	IMP
1	5	3NT	N-1 S4	50		0
5	1	3NT	N-1 S4	50		0
2	12	3NT	N-1 S5	50		0
12	2	3NT	N-1 S3	50		0
3	19	3NT	N-1 S5	50		0
19	3	3NT	N-1 S4	50		0
4	24	3NT	N-1 S5	50		0
24	4	3NT	N-1 S5	50		0
6	13	3NT	N-1 S4	50		0
13	6	3NT	N-1 S5	50		0
7	23	3NT	N-1 S5	50		0
23	7	3NT	N-1 S5	50		0
8	16	3NT	N-1 S5	50		0
16	8	3NT	S 5 C4	460		11
9	17	3NT	N-1 S4	50		0
17	9	3NT	N-1 S4	50		0
10	22	3NT	N-1 S5	50		0
22	10	3NT	N-1 S5	50		0
11	15	3NT	N-1 S5	50		0
15	11	3NT	N-1 S3	50		0
14	18	3NT	N-1 S5	50		0
18	14	3NT	N-1 S5	50		0
20	21	3NT	N-1 S5	50		0
21	20	3NT	N-1 S5	50		0

25

♠ Q6
♥ AK9843
♦ AK
♣ AK10

♠ 2
♥ 105
♦ Q10643
♣ Q9652

♠ K94
♥ Q62
♦ J752
♣ 873

♠ AJ108753
♥ J7
♦ 98
♣ J4

Board (25) Av: NS=+930

N-S	E-W	Contract	L	N-S	E-W	IMP
1	5	6S	S 7 D6	1010		2
5	1	4S	N 7 H3	510		-9
2	12	6NT	N 6 C8	990		2
12	2	6S	S 7 D3	1010		2
3	19	6H	N 6 C2	980		2
19	3	6S	S 7 D2	1010		2
4	24	4H	N 6 D5	480		-10
24	4	6S	S 6 D3	980		2
6	13	6S	N 7 C2	1010		2
13	6	6S	S 7 D2	1010		2
7	23	6H	N 6 C7	980		2
23	7	6H	N 6 C3	980		2
8	16	6S	S 7 C2	1010		2
16	8	6H	N 6 D6	980		2
9	17	6S	S 7 D2	1010		2
17	9	6S	S 7 D3	1010		2
10	22	6S	S 7 D2	1010		2
22	10	4H	N 6 S5	480		-10
11	15	6H	N 6 C6	980		2
15	11	4H	N 5 S9	450		-10
14	18	6NT	N 7 H2	1020		3
18	14	6H	N 6 D5	980		2
20	21	6S	S 7 D4	1010		2
21	20	6S	S 7 D3	1010		2

26

♠ Q2
♥ QJ542
♦ KJ10942
♣ KJ10942

♠ AJ108
♥ AJ963
♦ A87
♣ 8

♠ 962
♥ K85
♦ 10963
♣ A53

♠ KQ7543
♥ 1074
♦ K
♣ Q76

Board (26) Av: NS=-300

N-S	E-W	Contract	L	N-S	E-W	IMP
1	5	2S	S-3 C8	300		0
5	1	4H	E 5 H2	650		-8
2	12	4H	W 4 DQ	620		-8
12	2	4H	W 5 DQ	650		-8
3	19	2H	W 4 DQ	170		4
19	3	2S	S-4 HA	400		-3
4	24	3C	S 4 C9	130		10
24	4	4H	E 4 C2	620		-8
6	13	3H	E 4 D2	170		4
13	6	2S	S-4 C2	400		-3
7	23	2S	S-4 C8	400		-3
23	7	4H	E-1 DK	100		9
8	16	2S	S-3 HA	300		0
16	8	3NT	W-2 CJ	200		11
9	17	3H	W 4 D2	170		4
17	9	3NT	W 4 CT	630		-8
10	22	2D	S-3 C8	300		0
22	10	2NT	N-5 H2	500		-5
11	15	4C	N-1 H5	100		5
15	11	2S	S-4 C4	400		-3
14	18	2D	S-3 C8	300		0
18	14	3H	W 3 D2	140		4
20	21	2NT	W 2 CJ	120		5
21	20	2NT	W 2 CJ	120		5

27

♠ J64
♥ Q92
♦ 5432
♣ A96

♠ 853
♥ 1043
♦ QJ986
♣ J3

♠ AQ
♥ 8765
♦ K107
♣ Q1054

♠ K10972
♥ AKJ
♦ A
♣ K872

Board (27) Av: NS=+410

N-S	E-W	Contract	L	N-S	E-W	IMP
1	5	4S	S 5 S3	450		1
5	1	4S	N 5 DQ	450		1
2	12	4S	S 5 DQ	450		1
12	2	4S	S 5 H3	450		1
3	19	2S	S 4 S3	170		-6
19	3	4S	S 5 D2	450		1
4	24	4S	S 5 DQ	450		1
24	4	4S	S 4 S3	420		0
6	13	4S	N 5 S3	450		1
13	6	4S	S 5 DQ	450		1
7	23	4S	S 5 DQ	450		1
23	7	4S	S 5 DQ	450		1
8	16	2Dx	E-1 DA	100		-7
16	8	4S	N 5 H6	450		1
9	17	4S	S 5 DJ	450		1
17	9	4S	S 5 DQ	450		1
10	22	4S	S 4 DQ	420		0
22	10	4S	N 4 DQ	420		0
11	15	3NT	N 4 H7	430		1
15	11	4S	S 5 DQ	450		1
14	18	3NT	S-1 DQ	50		-10
18	14	4S	S 4 DQ	420		0
20	21	4S	S 4 DQ	420		0
21	20	4S	S 4 DQ	420		0

28

♠ J964
♥ QJ43
♦ J8
♣ Q62

♠ K85
♥ K107
♦ A74
♣ AK53

♠ 73
♥ 965
♦ Q1062
♣ J1098

♠ AQ102
♥ A82
♦ K953
♣ 74

Board (28) Av: NS=0

N-S	E-W	Contract	L	N-S	E-W	IMP
1	5	1NT	W-2 H3	100		3
5	1	2C	E 2 DJ	90		-3
2	12	1NT	W-1 H3	50		2
12	2	1NT	E-1 H2	50		2
3	19	2S	S-1 CA	100		-3
19	3	2C	E 3 D2	110		-3
4	24	1NT	W-2 H3	100		3
24	4	1NT	E 2 H3	120		-3
6	13	3C	E-1 HQ	50		2
13	6	1NT	W-1 S4	50		2
7	23	2S	S 2 CA	110		3
23	7	1NT	W 3 H3	150		-4
8	16	1NT	S-1 CA	100		-3
16	8	1NT	W 1 S6	90		-3
9	17	1NT	W-1 H3	50		2
17	9	2C	W 2 H4	90		-3
10	22	3C	W-1 S6	50		2
22	10	1NT	E-2 S3	100		3
11	15	1NT	W-1 H3	50		2
15	11	1NT	W 1 H3	90		-3
14	18	3C	W-1 HQ	50		2
18	14	1NT	W-1 S6	50		2
20	21	1NT	W 1 H3	90		-3
21	20	1NT	W-1 H3	50		2

29

♠ QJ4
 ♥ QJ1076
 ♦ K
 ♣ AJ105
 ♠ A 8752
 ♥ AK3 942
 ♦ J10532 Q874
 ♣ K863 72
 ♠ K10963
 ♥ 85
 ♦ A96
 ♣ Q94

30

♠ 87
 ♥ Q62
 ♦ J743
 ♣ 7643
 ♠ KQ652 A3
 ♥ AKJ97 8543
 ♦ 2 Q105
 ♣ Q5 AK102
 ♠ J1094
 ♥ 10
 ♦ AK986
 ♣ J98

Board (29) Av: NS=+260

Board (30) Av: NS=-420

N-S	E-W	Contract	L	N-S	E-W	IMP
1	5	3D	E-2 H8	200		-2
5	1	4S	N 5 DJ	650		9
2	12	3D	E-1 D6	100		-4
12	2	3S	S 5 D3	200		-2
3	19	3D	E-2 H8	200		-2
19	3	4S	S 5 D2	650		9
4	24	2H	N 4 H2	170		-3
24	4	3S	S 4 DJ	170		-3
6	13	4D	E-2 H8	200		-2
13	6	2S	S 4 HA	170		-3
7	23	3D	E-2 H8	200		-2
23	7	2Dx	W-1 D5	200		-2
8	16	3D	E-2 D6	200		-2
16	8	3D	E-2 H8	200		-2
9	17	2NT	W-3 HQ	300		1
17	9	3S	S 4 DJ	170		-3
10	22	4S	S 5 D2	650		9
22	10	3S	N 3 DJ	140		-3
11	15	3D	E-2 H8	200		-2
15	11	2S	S 5 HA	200		-2
14	18	2S	N 5 C7	200		-2
18	14	4S	N 4 C5	620		8
20	21	2S	S 5 D3	200		-2
21	20	2Dx	W-1 HQ	200		-2

N-S	E-W	Contract	L	N-S	E-W	IMP
1	5	4H	W 5 DJ	450		-1
5	1	4H	E 5 H3	450		-1
2	12	4H	W 5 D3	450		-1
12	2	4H	E 5 DA	450		-1
3	19	6H	E-1 DA	50		10
19	3	5H	W 5 D2	450		-1
4	24	5H	E 5 DA	450		-1
24	4	4H	E 6 SJ	480		-2
6	13	4H	E 5 D4	450		-1
13	6	4H	W 5 D3	450		-1
7	23	4H	W 5 D4	450		-1
23	7	4H	E 5 DA	450		-1
8	16	4H	W 5 DK	450		-1
16	8	4H	E 5 DA	450		-1
9	17	4H	E 5 D4	450		-1
17	9	5H	E 6 SJ	480		-2
10	22	4H	W 5 D4	450		-1
22	10	6H	E-1 D4	50		10
11	15	4S	E 4 DA	420		0
15	11	2H	W 5 D4	200		6
14	18	4H	W 5 D4	450		-1
18	14	4H	W 5 D4	450		-1
20	21	4H	W 5 D4	450		-1
21	20	4H	W 5 DJ	450		-1